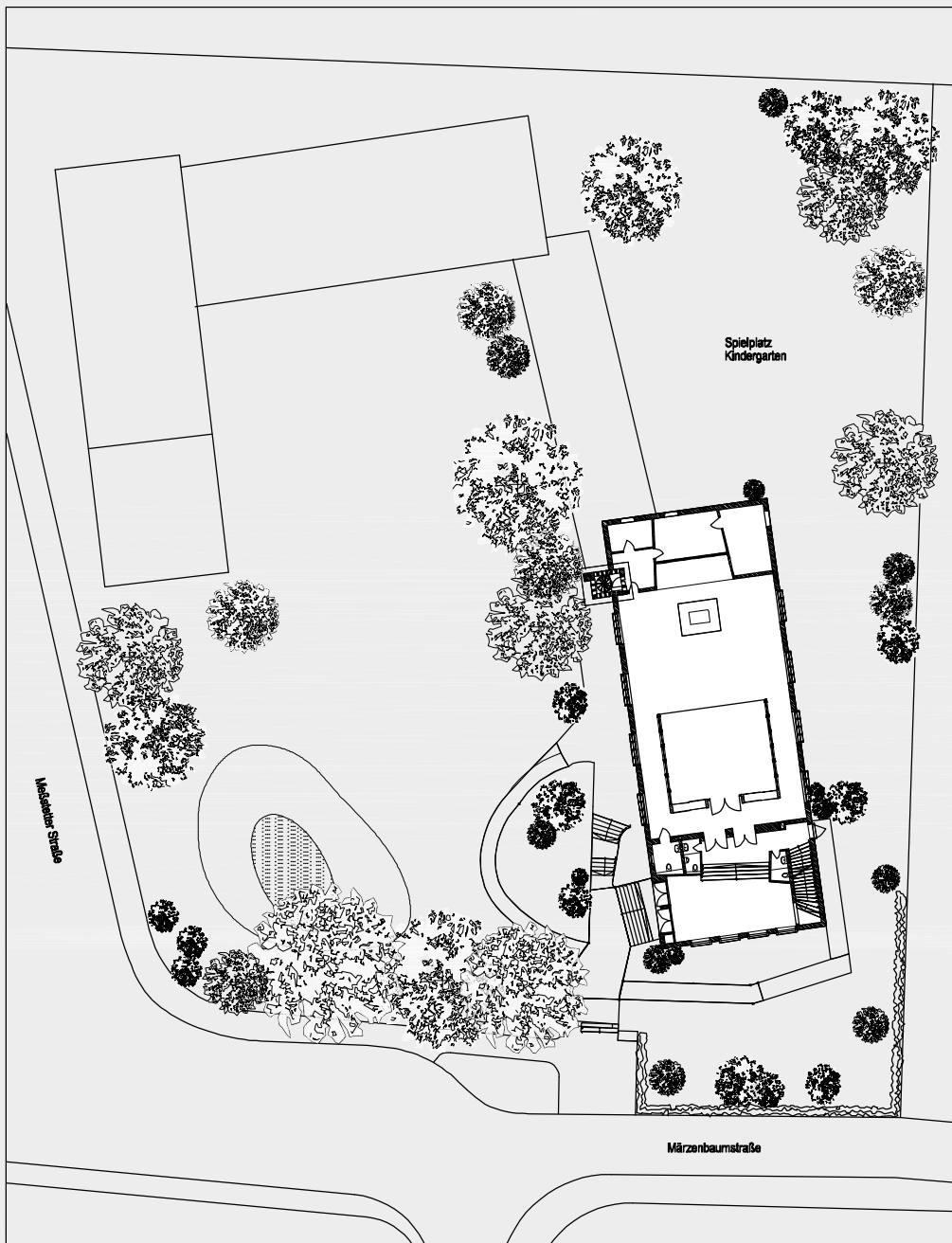


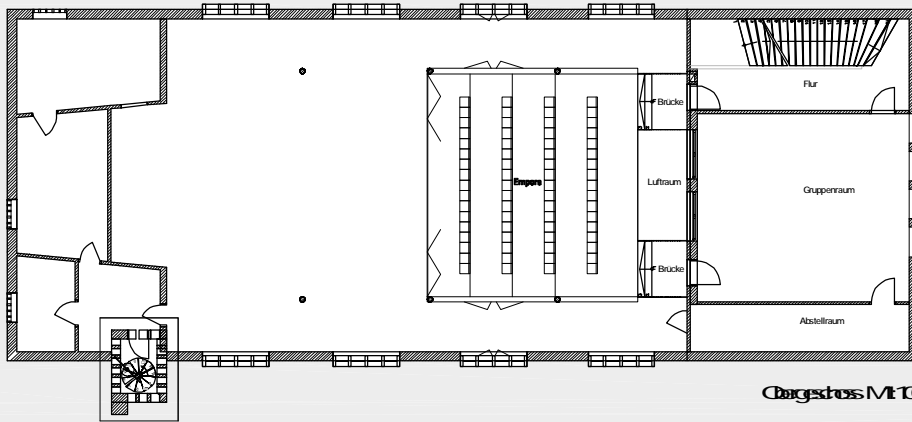
UMBAU DER CHRISTUSKIRCHE

in Stuttgart - Möhringen

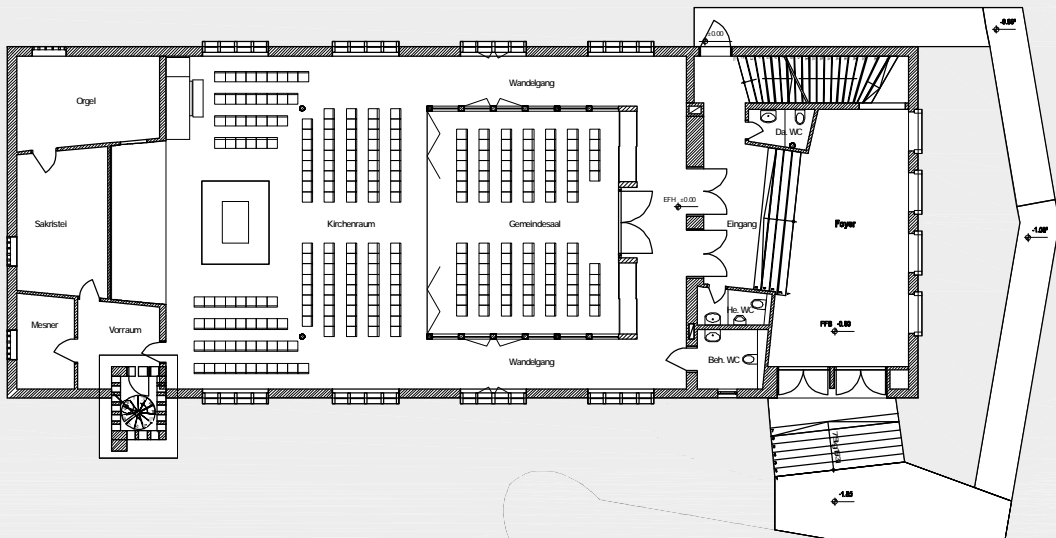
Wettbewerbsentwurf



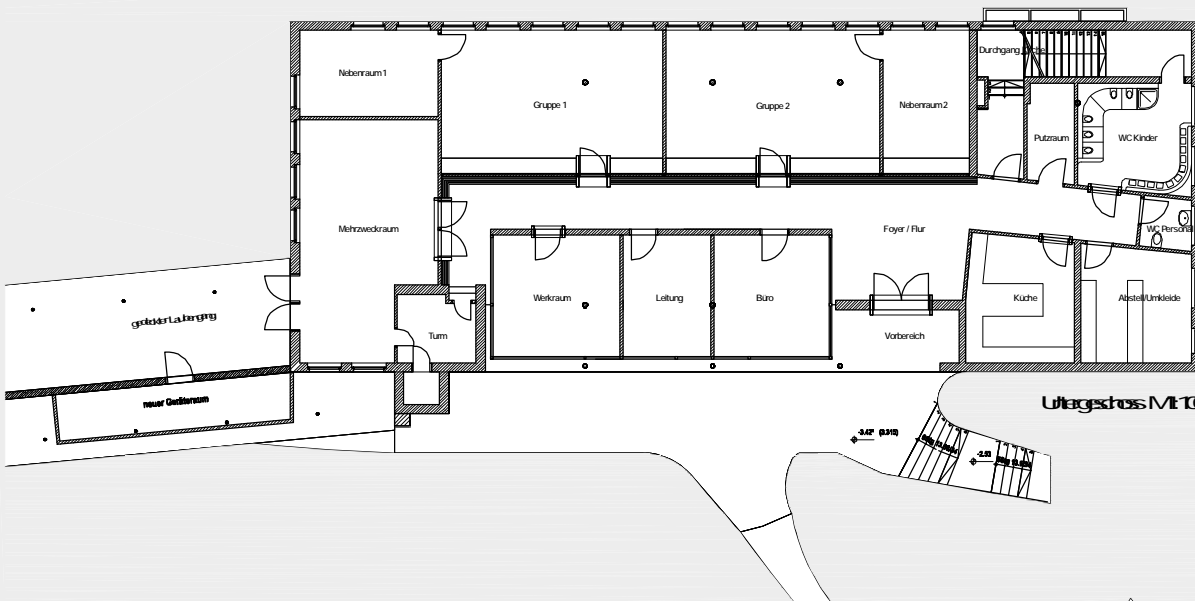
Lagplan ME20



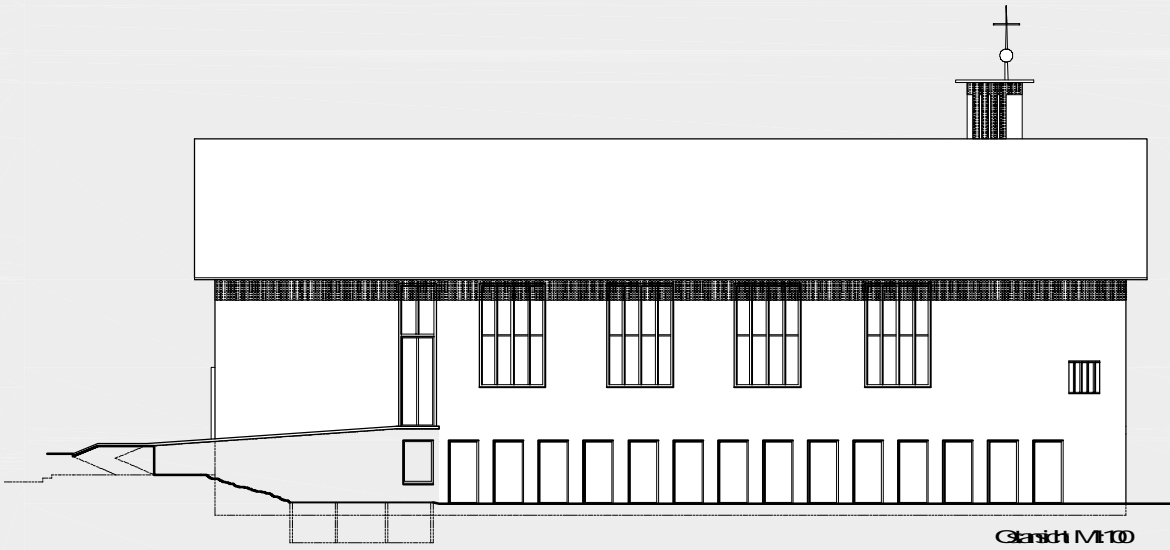
1. OG



2. OG



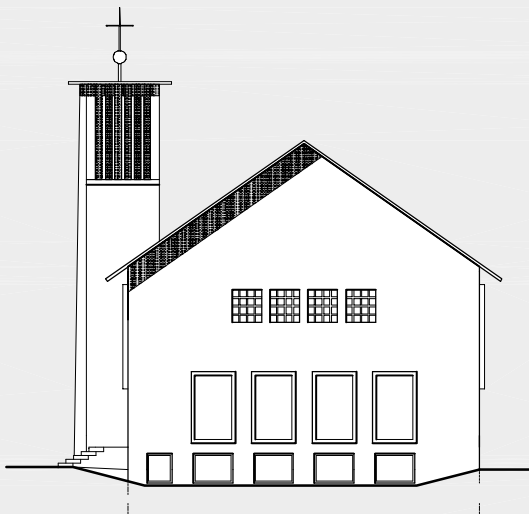
3. OG



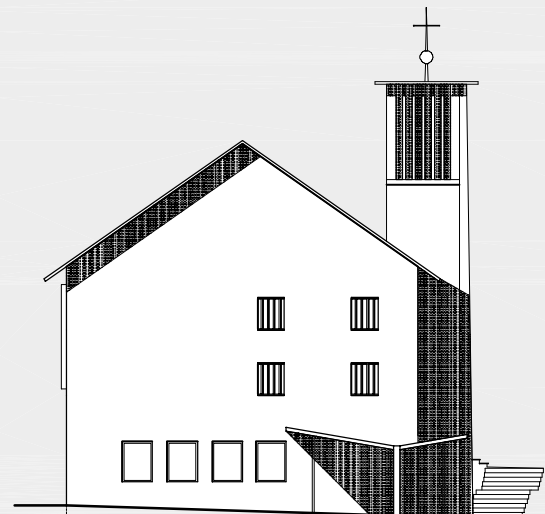
Gansicht M10



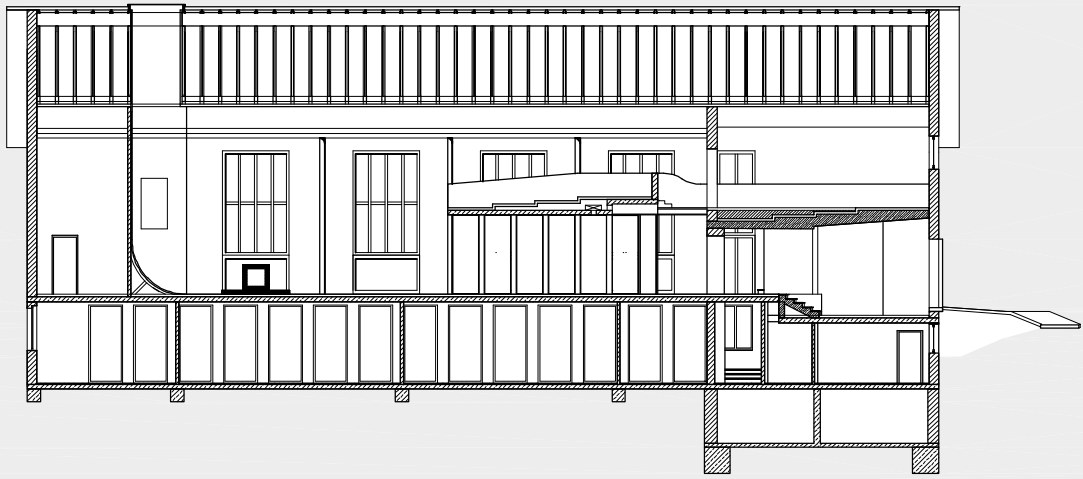
Vansicht M10



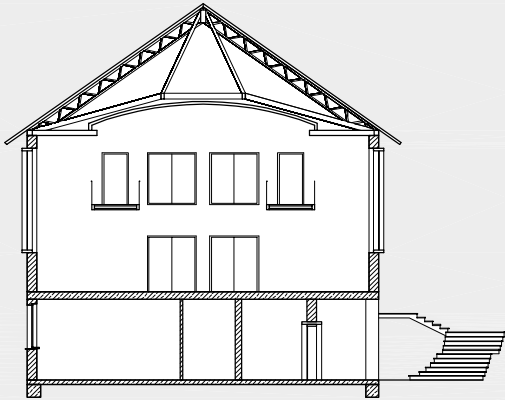
Südsicht M10



Nordsicht M10



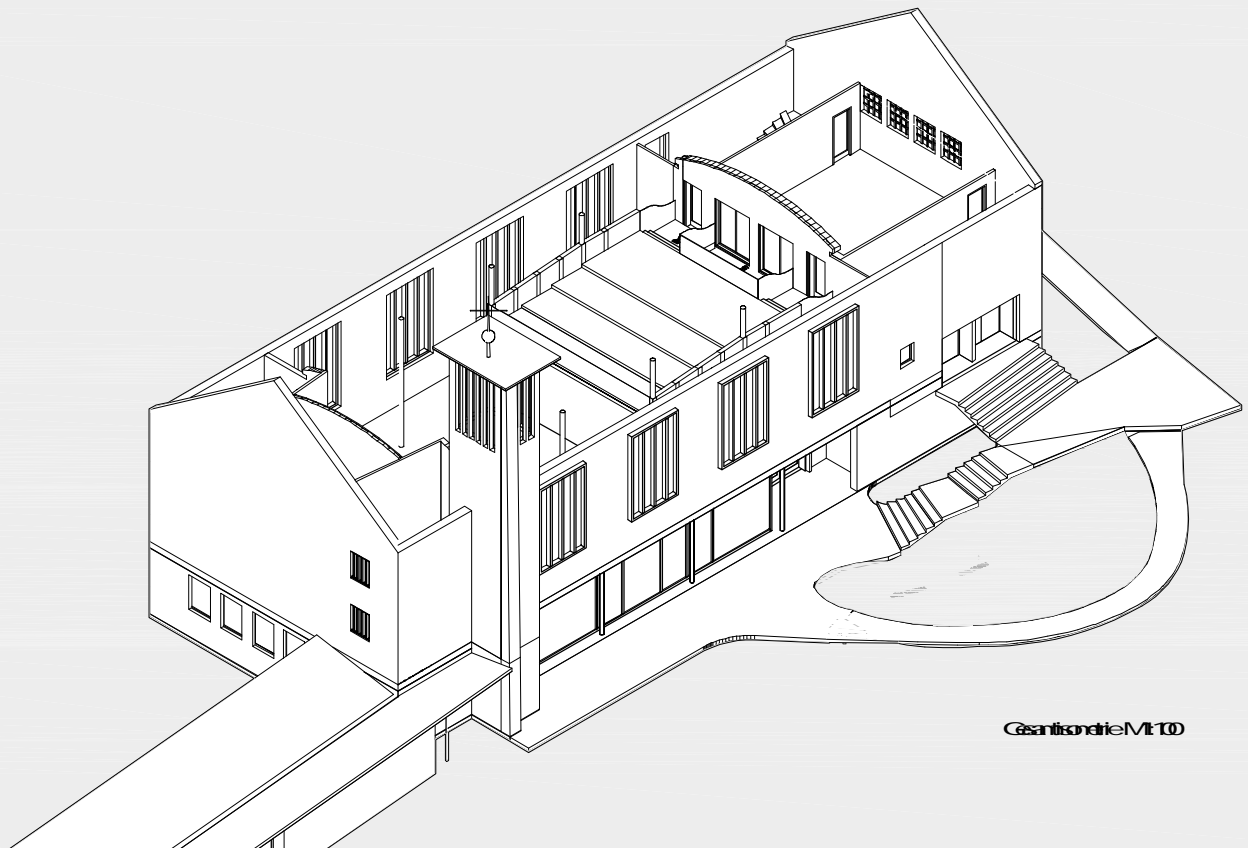
Längsschnitt M1:10



Querschnitt Außen M1:10

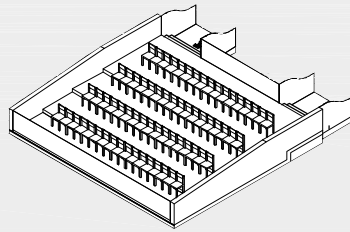


Querschnitt Innen M1:10

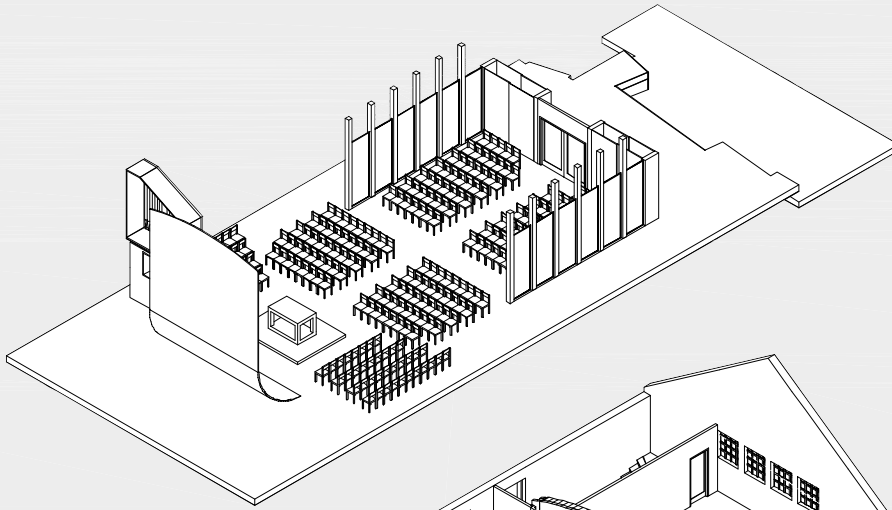


Genänsicht M1:10





konferenzfläche



konferenzraum



konferenzraum



konferenzraum

